



Labels for Net Metering (& Interconnected Customer Generation)

Customer shall label

- Meter (or Breaker box if it is within one foot of meter) with type and size of generator with arrow pointing to it stating distance to disconnect.
(Examples: **2.5 kW Solar & Batteries, 3 ft →...or...
2.5 kW Solar & Batteries, Inside** [when using breaker box only])
- If using breaker – The outside of the breaker box (that is more than one foot from meter) shall be labeled (Example: **Solar Disconnect Inside**) and the breaker shall be labeled with arrow (Example: **Solar Disconnect ⇒**)
- If using blade opening type disconnect – it shall be labeled with type of generator (Examples: **Solar Disconnect...or...Wind Power Disconnect**)

Label shall be red background with white letters and UV resistant. The lettering on each label/tag shall be 3/16 inch or larger and be either raised or incised on each tag. Each tag shall be riveted or glued to the meter loop or switch or disconnect. Permanently attached tags are required.

The customer shall get **written approval of any and all variances** preferably in the design and planning stage. Contact the local Entergy Representative (or call 1-800-ENTERGY to get a representative assigned)



Labels Needed on Solar Installations:

System rating/type

- Disconnect Switch
- Disconnect Distance
- Disconnect Arrow

Color:

- Red background
- White lettering (raised or embossed)

UV Rated 3/16 inch or larger Engraved or raised

Attachment: Permanent rivets or glue

Decals are not accepted

System Rating Label:

Description: This label should indicate the size of the system and what type of system is installed.

Example: 4.4 kw solar & batteries

Location of label: The system rating label can be on the meter pan cover. The label can also be on the breaker panel cover but only if the panel is within 1 foot of the meter pan.



Disconnect Distance Label:

Description: The disconnect distance label should show how far the disconnect switch is from the meter.

Example: 6 feet. 

Location of label: This label should be placed next to or under the rating label.

Disconnect Arrow Label:

Description: The disconnect arrow label is needed to show the direction the solar disconnect switch is from the meter.

Example: (see below)

Location of label: The arrow should be next to or connected to the disconnect location label.

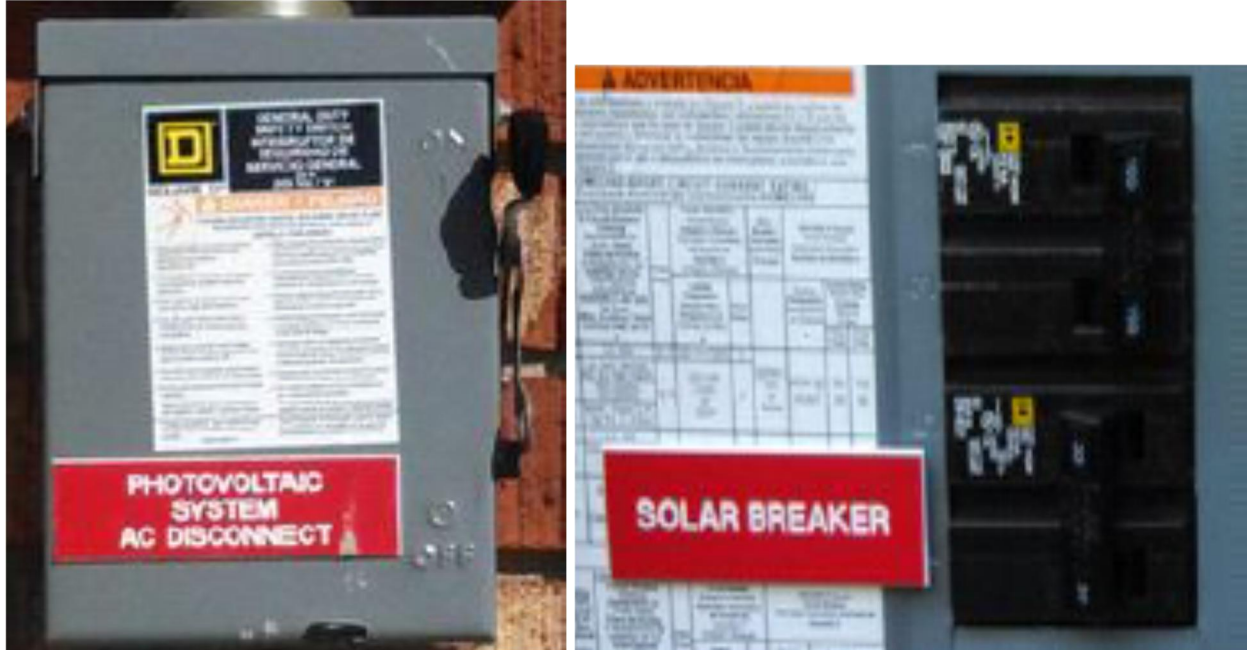


Disconnect label:

Description: The disconnect label shows where to disconnect the solar panel system.

Example: Solar disconnect

Location of label: The disconnect label should be placed on the disconnect switch cover. If the disconnect is inside the breaker panel that breaker should be labeled.



Manually Operated Load Break Switch

One visible blade opening, lockable, inspect-able disconnect for all the Net Metering generation within sight of service entrance meter preferably adjacent to meter, but within 10 feet of meter which is accessible to and lockable by Company personnel at all hours without notice shall be furnished by the Customer to the Company's specifications. (A pull-out type switch not accepted)

Company will accept one breaker (per customer) in lieu of blade opening type disconnect for non-battery backup solar units 25kVA and below. This breaker could be in a house panel/breaker box which is accessible to Company personnel at all hours without notice, and shall meet all of the other conditions of this section.

JED 11.14.13